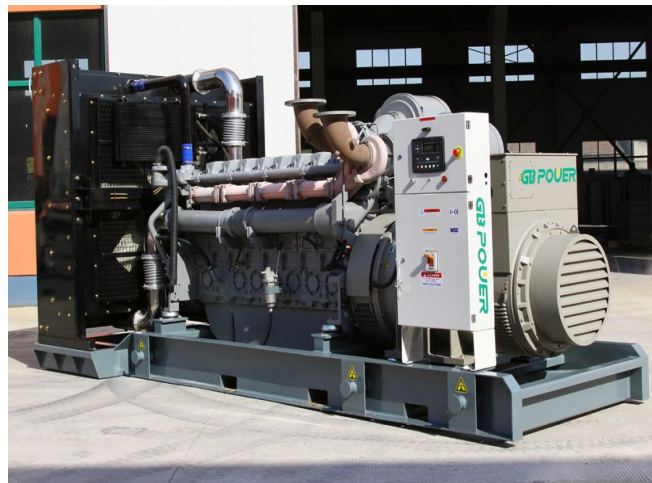


**Standard Features**

MODEL	GB-P1000
Standby Power(50Hz)	880KW/1100KVA
Prime Power(50Hz)	800KW/1000KVA
Engine	PERKINS 4008TAG2A
Alternator	STAFMORD LVI634E

- **Engine(PERKINS UK 4008TAG2A)**
- Radiator 40°C max, fans are driven by belt, with safety guard
- 24V charge alternator
- **Alternator(STAFMORD LVI634E),**
- single bearing alternator, Protection Class IP23, insulation class H/H
- Dry Type air filter, fuel filter, oil filter, pre-filter, absorber
- Main line circuit breaker
- Standard control panel
- Two 12V batteries, rack and cable
- Ripple flex exhaust pipe, Exhaust siphon, flange, muffler
- Operation manual



Generator Set Ratings						
Voltage	Frequency	Phase	P.F (COS $\phi$ )	Standby Amps	Standby Ratings (KW/KVA)	Prime Ratings (KW/KVA)
440/254	50	3	0.8	1445	880/1100	800/1000
415/240	50	3	0.8	1530	880/1100	800/1000
400/230	50	3	0.8	1588	880/1100	800/1000
380/220	50	3	0.8	1673	880/1100	800/1000

Prime Power (PRP): Prime power is available for an unlimited number of annual hours in variable load application, in accordance with GB/T2820-97 (equiv ISO8528); A 10% overload capability is available for a period of 1 hour within a 12-hour period of operation. Standby Power Rating (ESP): The standby power rating is applicable for supplying emergency

Dimension Of Generator Set	
Dimension(L*W*H)/CM For Open Type	540×165×245 CM
Net Weight/KG For Open Type	8500KGS
Dimension(L*W*H)/CM For Sound Proof Type	606×244×260 CM
Net Weight/KG For Sound Proof Type	9800KGS
Dimension (L*W*H)/MM For Trailer Type	
Net Weight/KG For Trailer Type	

Specification Of Engine		
Engine	Engine Model	4008TAG2A
	Manufacturer	PERKINS UK
	Prime Power	861KW/1154HP
	Standby Power	947KW/1269HP
	Engine Configuration	8Cylinder In Line, 4Stroke, Direct Injection
	Gas Feeding Model	Turbocharged Air-Air after cooled
	Bore× Stroke	160× 190 (MM)
	Displacement	30.56L
	Rated Speed	1500RPM
	Speed Governor	Electrical
	Starter Model	24V DC Start
	Fuel Consumption Prime Power (100% load)	220L/H
	Totally lubrication system Capacity	165.6L
	Coolant capacity	162L
	Cooling System	Water Cool
	Compression Ratio	13.6:1

Specification Of Alternator		
Alternator	Alternator Model	LVI634E
	Manufacturer	STAMFORD company
	Prime Output	800KW/1000KVA
	Standby Output	880KW/1100KVA
	Excitation Model	Brushless, Self-Exciting
	Cooling Method	Air Cooling
	Connection Type	3 Phase and 12 Wires "Star" Connection
	Power Factor	0.8
	Protection Class	IP23
	Insulation Class	H
	Altitude	≤ 1000m
	Voltage Regulation, Steady State	≤ ± 1%
	Telephone Influence Factor	< 50
	Sudden Voltage Warp (100% Sudden Reduce)	≤ ± 1%
	Sudden Voltage Warp (Sudden Increase)	≤ ± 25%
	Voltage Stable Time (100% Sudden Reduce)	≤ 6S
	Voltage Stable Time (Sudden Increase)	≤ 6S
	Frequency Reduce	0-5% adjustable
	Frequency Regulation, Stead State	≤ 1.5%
	Frequency Waving	≤ 0.8%
	Sudden Frequency Warp (100% Sudden Reduce)	≤ +12%
Sudden Frequency Warp (100% Sudden Increase)	≤ -10%	
Frequency Recovery Time (100% Sudden Reduce)	≤ 5S	
Frequency Recovery Time (Sudden Increase)	≤ 5S	
Compliance Standards	GB755,BS5000,VDE0530,NEMAMG1-22,IED34-1,CSA22.2 and AS1359	

**Control Panel System**



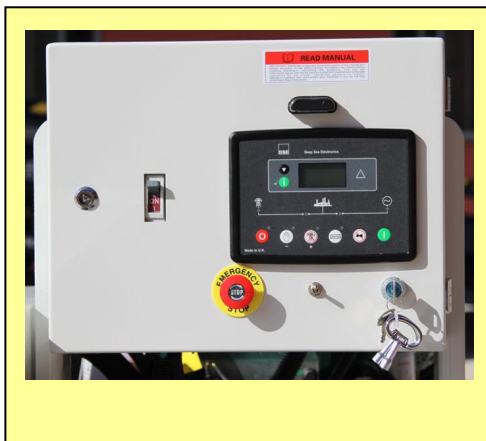
**DEEPSEA501K CONTROL MODEL/ MANUAL USE**

With Four Protection

1. High water Temperature Shutdown
2. Low Oil Pressure Shutdown
3. Over Speed Shutdown
4. Over Crank Shutdown
5. Protection as Emergent Stop

**Parameters of Operation:**

1. Emergency Stop Button
2. Voltmeter and Selector Switch
3. Ammeter and Selector Switch
4. Frequency Meter
5. Hour Running Meter
6. Alarm Buzzer



**DEEPSEA6020 CONTROL MODEL/ MANUAL OR ATS USE**

With Four Protection

1. High water Temperature Shutdown
2. Low Oil Pressure Shutdown
3. Over Speed Shutdown
4. Over Crank Shutdown
5. Protection as Emergent Stop

**Parameters of Operation:**

Digital type, all function showed by LED



**DEEPSEA7320 CONTROL MODEL/ MANUAL OR ATS USE**

With Four Protection

1. High water Temperature Shutdown
2. Low Oil Pressure Shutdown
3. Over Speed Shutdown
4. Over Crank Shutdown
5. Protection as Emergent Stop
6. With Remote Teleport Communication RS 485

**Parameters of Operation:**